



LR50-Series Features

Balanced Charge Agglomeration (BCA[®]) Technology

Mitigates Varnish through:

- Submicron contaminant removal
- Removal of sludge and varnish precursors
- Removal of ferrous and non-ferrous contamination

Efficient and highly effective water removal with coalescer option

Extends the life of antioxidant additives by removing products of oxidation

Highest flow rates in the industry

Treatable Fluids

- Lubrication oil
- Hydraulic oil
- Phosphate ester
- Machining oil
- Diesel fuel
- EDM fluid
- Dielectric fluids
- Turbine oil
- Many other non-conducting fluids

ISOPur LR50-Series Fluid Purification

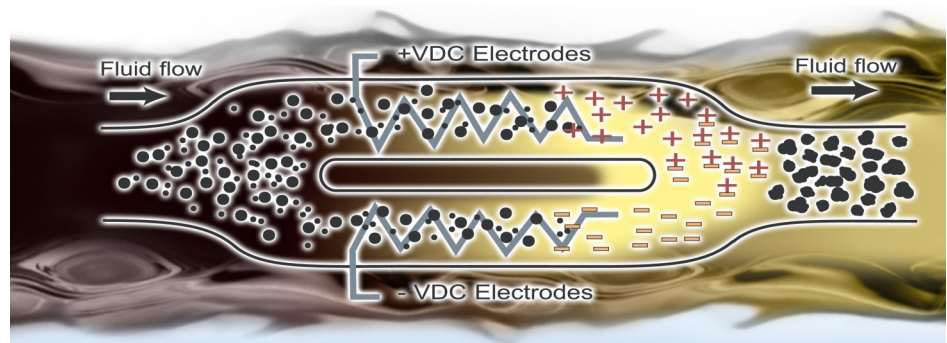
The ISOPur LR50 Series is the smart purification solution for flow rates in the 75 to 300 GPH (284 –1135 LPH) range. The LR50 Series contains ISOPur's patented Balanced Charge Agglomeration (BCA[®]) technology which maintains hydraulic and lubricating fluids in pristine condition by preventing and removing the buildup of sludge and varnish. BCA[®] is paired with intelligence of SmartPak[™], which automatically senses fluid condition and adjusts flow accordingly.



BCA[®] Benefits

- *Removal of pre-existing varnish*
- *Sub-micron particle removal*
- *Enhances current filtration*
- *Highest flow rate in the industry*
- *Quicker oil and system clean-up*
- *Reduced maintenance & repair costs*
- *Extended equipment life*

BCA[®] Process Sub-micron Purification



1. Fluid enters the ISO-Pur Charging and Mixing Unit (CMU) and the flow is split into two paths.

2. Particles in the two paths are electrostatically charge positive and negative by electrodes.

3. The oppositely charge particles attract and agglomerate to form large particles that are removed by the filtering system.



SmartPak™ Features



LR50-Series PLC Display

SmartFlow

- Measures Temperature, Pressure and Flow
- Optimizes Flow Rate

FilterMinder

- Filter Change Auto Reminder
- Unusual Flow/Pressure Alarms

SmartView

- Display Real-Time Conditions
- Easy Custom Programming

Phosphate Ester Standard

Options:

Simplified Version

- No PLC
- Two Speed Operation
- Mechanical Gauge
- Variable Frequency Drive

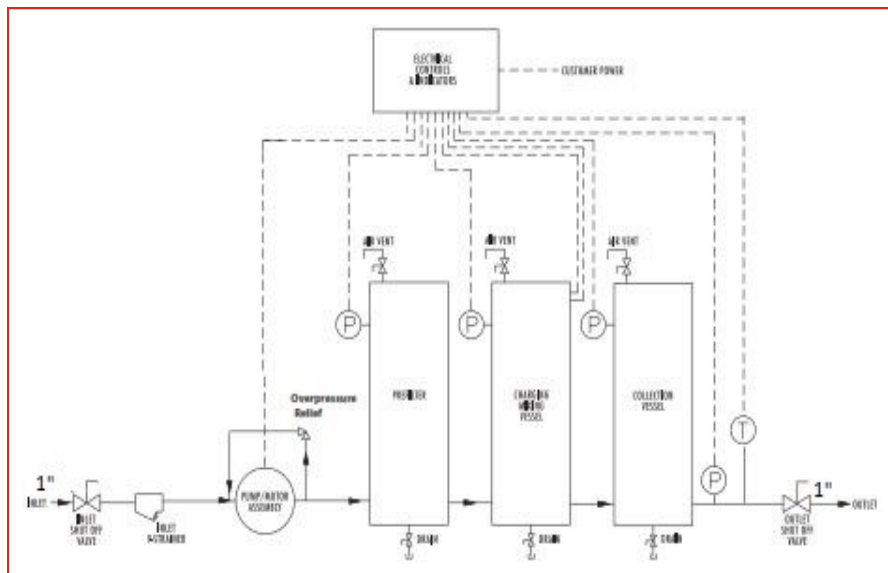
Basic Version

- Motor Starter

Explosion Proof:

- NEMA 7, NFPA, ATEX

ISOPur LR50 Series Specifications



	USA	International
Flow Rate	75 to 300 GPH	284 to 1135 LPH
Dimensions (H x W x D)	44in x 31in x 23in	112cm x 79cm x 58cm
Servicing Area (H x W x D)	44in x 39in x 48in	112cm x 99cm x 119cm
Filter Change Area	7in under vessel	18cm under vessel
Weight Dry	233 lbs.	106 Kg
Weight Wet	273 lbs.	124 Kg
Pump Discharge Pressure	2 to 80 psig	0.14 to 5.5 Bar
Fluid Temperature Range	65 to 200° F	18 to 93° C
Minimum Flash Point	140° F	60° C
Pump Type	Positive Displacement Gear Pump	
Motor	TEFC, EPFC, ATEX	
PRM	600 to 1900 RPM	
Power	1 HP	0.75 Kw
Main Supply (Volts/Hz)	115 - 460/60	220 - 400/50
Amps	Dedicated 15 Amp Branch Service	
Fluid Viscosity*	2 to 220cSt at 40° C	
Ambient Humidity Range	Up to 95% Non-condensing	
Pre-Filter Cartridge	ISOPur Custom	
Collection Filter Cartridge	ISOPur Custom	
Storage Ambient	0 to 132° F	- 18 to 55° C
Suction Connection	1.0 in NPT	1.0 in NPT
Discharge Connection	1.0 in NPT	1.0 in NPT